

MINNESOTA DEPARTMENT OF TRANSPORTATION

THE COUNTY OF POPE

CONSTRUCTION PLAN FOR

MILL, BITUMINOUS SURFACING and AGG. SHOULDER

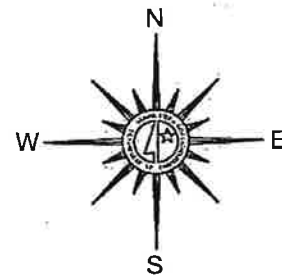
LOCATED ON C.S.A.H. 1 BETWEEN Jct. 255th St AND Jct. CSAH 18 (GEOGRAPHIC DESCRIPTION)
FROM A POINT S 88°40' W A DIST. OF 867.8 FT FROM CENTER SEC. 22, T24N, R40W TO N 1/4 COR. SEC. 10, T124N, R40W (LEGAL DESCRIPTION)

STATE AID PROJ. NO. 061-601-015
GROSS LENGTH 13,725.05 ft 2.599 mi.
BRIDGES LENGTH 0.00 ft 0.000 mi.
EXCEPTIONS LENGTH 0.00 ft 0.000 mi.
NET LENGTH 13,725.05 ft 2.599 mi.

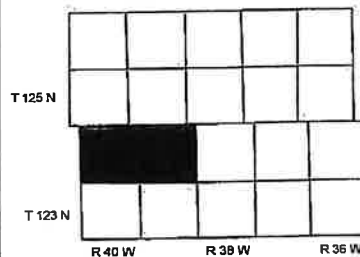
BEGIN S.A.P. 061-601-015
STA. 252+03.00

END S.A.P. 061-601-015
STA. 389+28.05

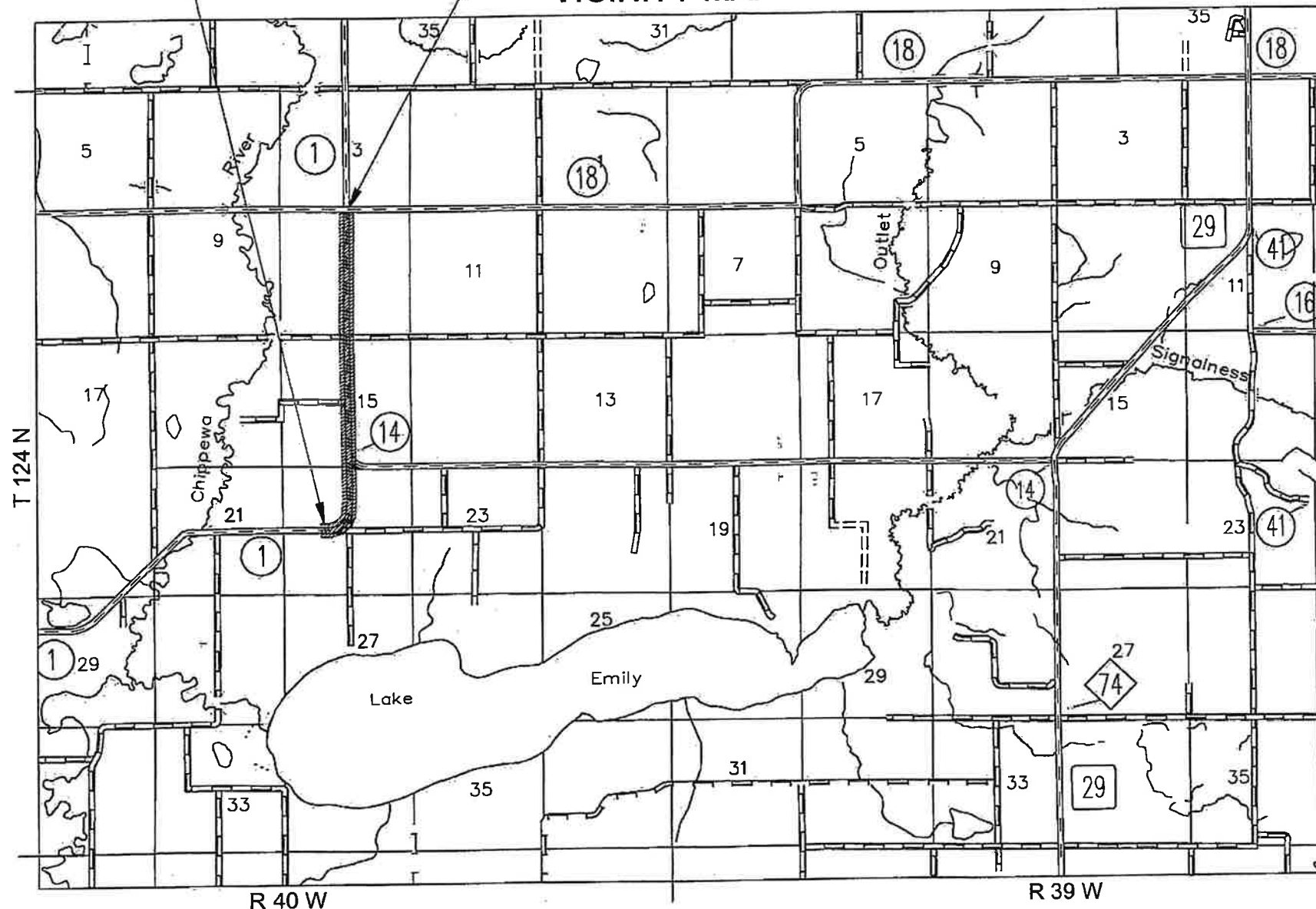
VICINITY MAP



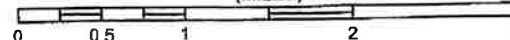
Outline Map of the County.



Outline Map of Minnesota showing location of the County within the State.



GRAPHIC SCALE
(MILES)



FED. PROJ. NO. _____
MINN. PROJ. NO. _____

GOVERNING SPECIFICATIONS

THE 2020 EDITION OF THE MINNESOTA DEPARTMENT OF TRANSPORTATION "STANDARD SPECIFICATIONS FOR CONSTRUCTION" SHALL GOVERN.

INDEX

SHEET	DESCRIPTION
1	TITLE SHEET, VICINITY MAP
2	ESTIMATED QUANTITIES & STANDARD PLATES
3	TYPICAL SECTIONS
4	TRAFFIC CONTROL

THIS PLAN CONTAINS 4 SHEETS

DESIGN DESIGNATION

Pres. ADT 350 (2025)
Proj. ADT 390 (2045)
R Value 12 estimated
ESALs 116,000
Design 10 Ton
Soil Factor 100 %
Shoulder Width 3.5 ft.
Grade In _____
Functional Classification Major Collector
No. of Traffic Lanes 2 - 11 ft
No. of Parking Lanes _____
Design Speed 50 mph STA. 252+03 to STA. 389+28
Design Speed _____ mph
Design Speed _____ mph
Design Speed _____ mph
Based on STOPPING Sight Distance
Height of eye 3.5 ft Height of object 2.0 ft
Design Speed not achieved at:
STA. _____ To STA. _____ mph _____
STA. _____ To STA. _____ mph _____

ENGINEERS CERTIFICATION

I HEREBY CERTIFY THAT THIS PLAN WAS PREPARED BY ME OR UNDER MY DIRECT SUPERVISION AND THAT I AM A DULY LICENSED PROFESSIONAL ENGINEER UNDER THE LAWS OF THE STATE OF MINNESOTA.

[Signature]
BRYAN S. GIESE, COUNTY ENGINEER

DATE 12/30/24

POPE COUNTY LIC. NO. 42353

Nathan M.R. Damm DATE 12/30/24
DISTRICT STATE AID ENGINEER: Reviewed for Compliance with State-Aid Rules/Policy

Nathan M.R. Damm DATE 12/30/24
STATE AID ENGINEER: Approved for State Aid Funding

STATE AID PROJ. NO. 061-601-015
STATE PROJ. NO. _____

SHEET NO. 1 OF 4 SHEETS

ESTIMATED QUANTITIES			
SPECIFICATION NO.	ITEM	UNIT	TOTAL ESTIMATED QUANTITIES
2051.501	Maintenance & Restoration of Haul Roads	L.S.	1
2118.509	Aggregate Surfacing Class 1	Ton	1,120
2232.504	Mill Bituminous Surface (2.0")	Sq. Yd.	35,910
2357.506	Bituminous Material for Tack Coat	Gallon	3,620
2360.509	Type SP 9.5 Wearing Course Mixture (2,B)	Ton	6,120
2563.601	Traffic Control	L.S.	1
2582.503	4" Solid Line Paint - Yellow	L.F.	5,070
2582.503	6" Solid Line Paint - White	L.F.	27,360
2582.503	4" Broken Line Paint - Yellow	L.F.	2,620

(1)

(2)

(3)

BASIS FOR ESTIMATED QUANTITIES

Aggregate Base and Shouldering
105 lbs. per Square Yard per Inch

SP Wearing Course Mix
Mixture Designation SPWEA230B
110 lbs. per Square Yard per Inch

Bituminous Material
Bituminous Material shall be PG 58S-28
Tack Coat shall be CSS-IH or CQS-IH at 0.05 Gallons per S.Y.

NOTES

- 1. Estimated Quantity includes; 144 tons for 32 entrances and 89 tons for slope correction.
 - 2. Estimated Quantity includes; 1133 sy for pavement bumpouts; and 1376 sy for 5 paved entrances.
 - 3. Estimated Quantity includes; 265 tons for 7 entrances and 138 tons for slope correction and ride. Entrances may be constructed in 1 pavement lift.
 - 4. The subsurface utility information in this plan is utility quality level "D". This utility quality level was determined according to the guidelines of CI/ASCE 38-22, entitled "Standard Guidelines for Investigating and Documenting Existing Utilities". The Contractor shall consider all work around existing utilities INCIDENTAL to work under this project.
- (P) Denotes Plan Quantity
- * All units and dimensions are in English.

STANDARD PLATES

THE FOLLOWING STANDARD PLATES, APPROVED BY THE FEDERAL HIGHWAY ADMINISTRATION, SHALL APPLY ON THIS PROJECT.

PLATE NO.	DESCRIPTION
8000 K	Channelizers
9000 E	Approaches & Entrances

UTILITY COMPANIES (4)

Gopher State One Call	(800) 252-1166
Runestone Electric Assoc	(320) 759-4424
Starbuck Telephone	(320) 239-2211



HIGHWAY DEPARTMENT
PHONE: (320) 634-7745
FAX: (320) 634-4388

CERTIFIED BY: 
PROFESSIONAL ENGINEER

DATE: 12/20/24
LIC. NO. 42353

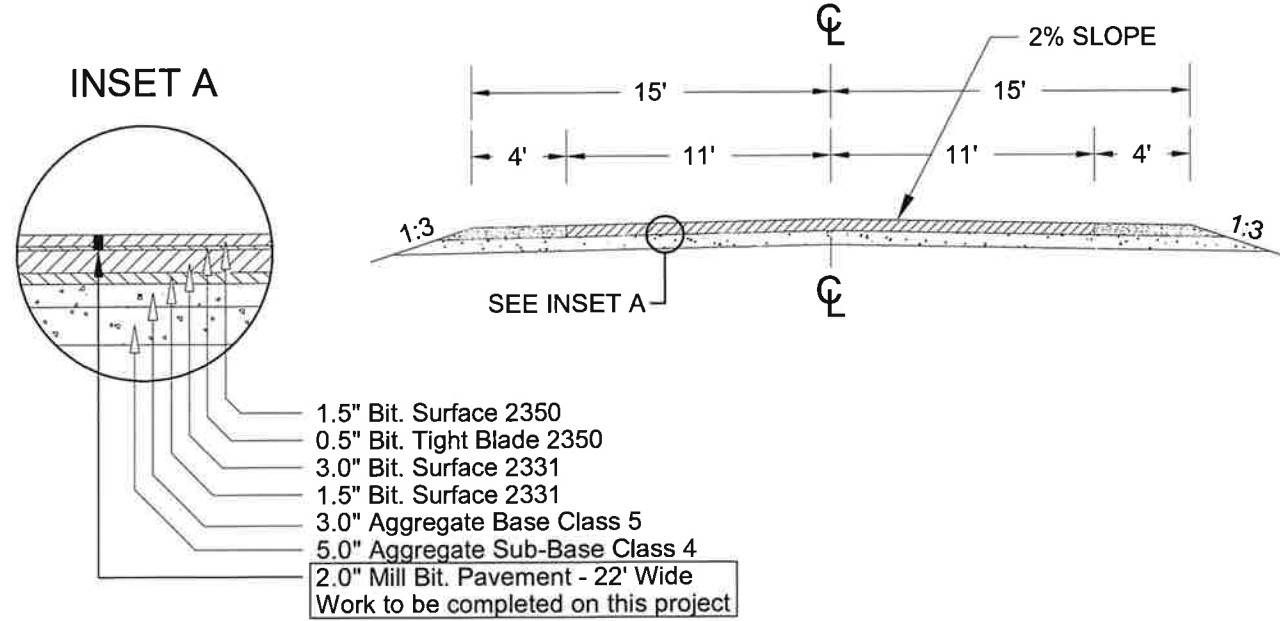
ESTIMATED QUANTITIES
PROJECT No. 061-601-015

SHEET NUMBER
2 OF 4 SHEETS

TYPICAL BASE AND SURFACE SECTIONS-EXISTING

NOT TO SCALE

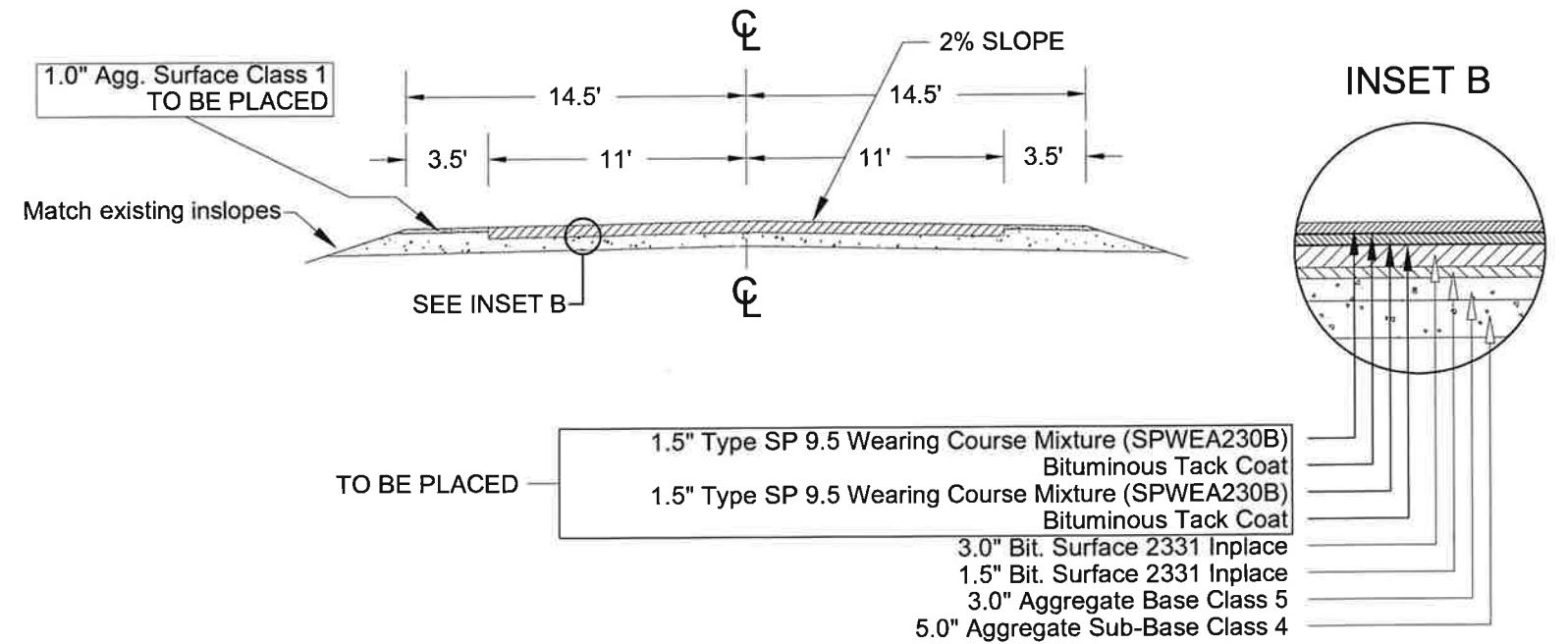
STA: 252+03 to 389+28



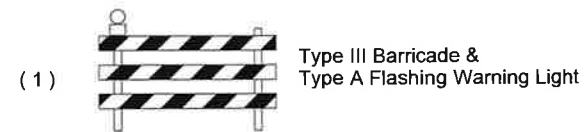
TYPICAL BASE AND SURFACE SECTIONS-NEW

NOT TO SCALE

STA: 252+03 to 389+28



INDEX



ADVANCE WARNING SIGN TABULATION

SIGN TYPE	QTY
Type III Barricade w/flasher	4
W20-1	7
W20-4	2
M1-X4	4
G20-2a	4

TRAFFIC CONTROL

1. Advance Signing will be the responsibility of the Contractor. The Contractor will furnish, install and maintain all traffic control signs and devices as shown in the details on this sheet.
2. Construction Zone signing and flagging will be the responsibility of the Contractor and shall include, but is not limited to; signs, barricades, and flashers for Zone Road Closures and other items as applicable. The number and location of the signs will be determined by the Contractor's operations.
3. All costs associated with Advance Signing & Construction Zone Traffic Control shall be included in the bid price for 'Traffic Control'.
4. All Traffic Control Devices shall conform to the most recent edition of the MN MUTCD and Temporary Traffic Control Zone Layouts (Field Manual).
5. Access shall be provided to residents along roadway at all times except temporary closures.

ADVANCE SIGNING DETAIL

Not to Scale

