

February 3, 2025

ADDENDUM 1 – JOB 23910

TO: All prospective bidders on Projects TAC-1-981(138), Job No. 23910 scheduled for the February 7, 2025 bid opening.

The following revision(s) shall be made:

Plan Revisions:

See attached summary from Derek D. Pfeifer, P.E. dated February 3, 2025 for an explanation.

This addendum is to be incorporated into the bidder's proposal for this project.



for PHILLIP MURDOFF, P.E. – CONSTRUCTION SERVICES ENGINEER

80: jwj

Enclosure

PLAN ADDENDUM SUMMARY AND APPROVAL

PROJECT INFORMATION		
Project:	TAC-1-981(138)	PCN: 23910
Location:	Bismarck Parks and Recreation District, South Washington Street Trail	
Date:	2-3-2025	Lead Designer: Thomas Demke
Bid Opening Date:	2/7/2025	JOB#: 23910 Addendum#: 1

PLAN SHEET CHANGES		
Section	Sheet	Description
6	1	Added Detectable Warning Panel note. 750-P02
60	1-3	Modified Temporary Easements from Stations 17+30 to 24+64, 27+65 to 29+62, and 33+07 to 36+23
60	2-3	Modified Permanent Easement from Station 29+62 to 32+27

APPROVAL

Should the revisions described above be processed as a plan addendum?

X Yes _____ No


Derek Pfeifer, P.E. – Local Government Engineer

2/3/2025
Date

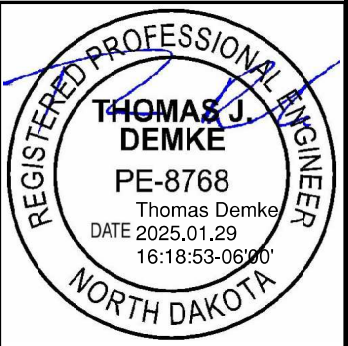
STATE	PROJECT NO.	SECTION NO.	SHEET NO.
ND	TAC-1-981(138)	6	1

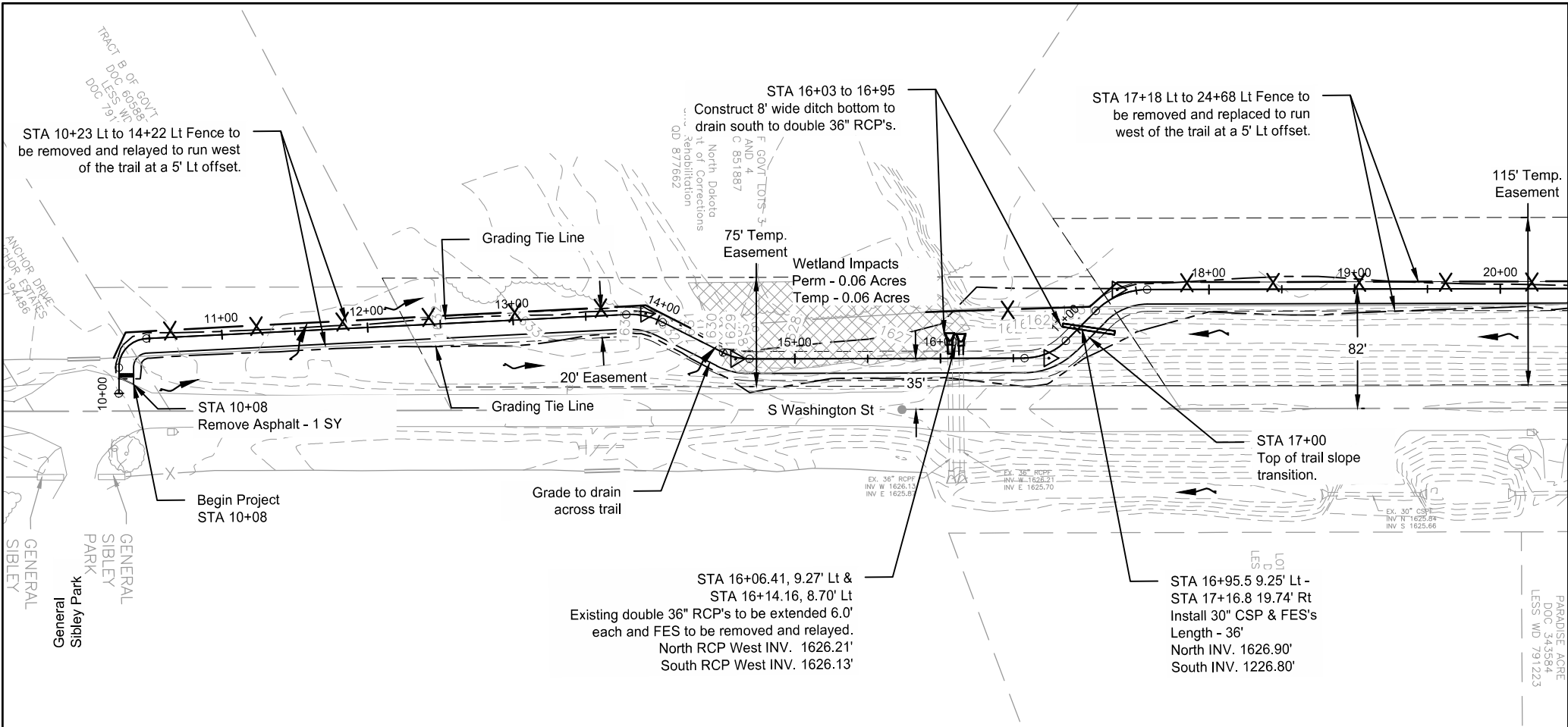
NOTES

GENERAL NOTES

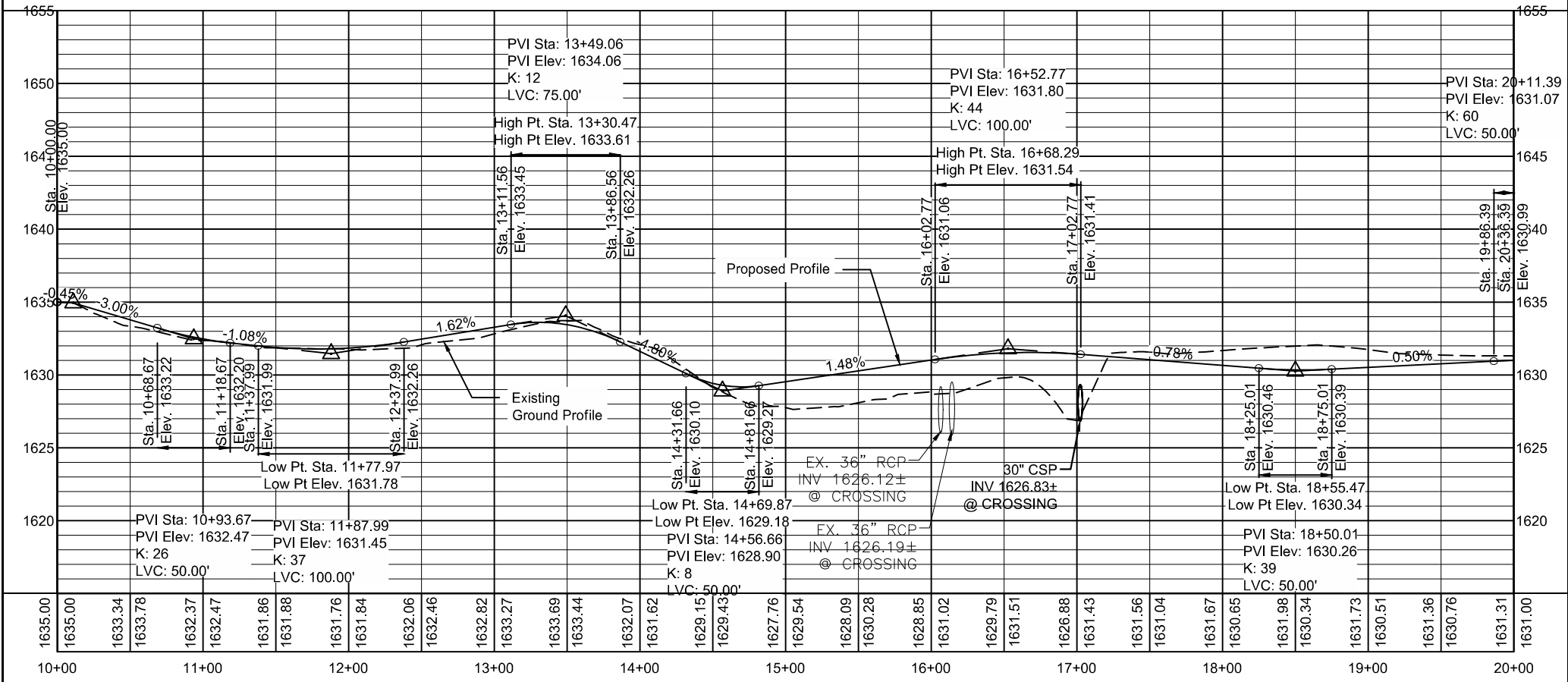
- 100-P01 UTILITIES: All utility companies were notified to mark their services. All underground utilities shown were either marked by their owners in the field or taken from maps supplied to Apex Engineering Group Inc. by the utility owner at the time of the survey. Apex Engineering Group Inc. does not certify to the completeness and/or accuracy of these locations. Persons using this survey should contact each utility company to verify that all utilities.
- Take measures to protect all existing utilities. Repair any damage caused by work at contractor's expense.
- 107-500 PAVEMENT SWEEPING: Sweep the roadways adjacent to work area at the end of each day. Use a vacuum or pickup type sweeper.
- 107-P01 HAUL ROAD RESTRICTIONS: Follow all and any local road authority haul road restrictions.
- 107-P02 SITE ACCESS: Access construction zone from public road or right of way. Avoid using private driveways as access, any damage to roadway or private driveways shall be repaired at the contractor's expense. Maintain access to homes and businesses for duration of construction.
- 201-P01 CLEARING AND GRUBBING: Tree and Woody Vegetation Removal: Remove trees and woody vegetation as shown on plans. Required tree removal limits are at minimum 14 feet, 2 feet outside of each edge of path or Grade Tie limits shown in the plans, whichever is greater. Remove branches vertical of the trail to ensure construction operations can proceed. Any tree of 3" DBH or larger are to be removed during inactive season of the Northern Long-Eared Bat from November 1 to April 14th. This includes the removal of felled trees that can be considered habitat. Removal of all trees, woody vegetation and stumps and all other items associated with this shall be included in the bid price for "Clearing and Grubbing".
- 201-P02 Protect trees and roots of trees that are not removed.
- 202-P02 REMOVAL OF BITUMINOUS SURFFACING: Include the cost to sawcut asphalt in the unit price bid for "Removal of Bituminous Surfacing".
- 203-010 SHRINKAGE: 25 percent additional volume is included for shrinkage in earth embankment.
- 203-P01 REMOVE AND SALVAGE TOPSOIL: There will be excess topsoil on the project. The salvaged topsoil will become the property of the Contractor and will be removed from the site. All costs associated with the excess topsoil will be included in the price bid for "Topsoil". The estimated excess topsoil is 256 CY.
- 203-P02 COMPACTION AND DENSITY CONTROL: Compact material as specified in Section 203.04 G.3, Compaction Control, Type B.


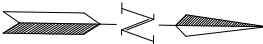
- 203-P03 MAINTAIN DRAINAGE: Maintain drainage throughout construction of project. Maintain drainage in a manner that does not inundate roadways, driveways, or adjacent properties.
- 251-P01 SEEDING CLASS III: Seed disturbed ground immediately after topsoil placement to promote early seed growing conditions. Use a seed mixture as follows:
- | | |
|--------------------|-------------------|
| Seed | Percent by Weight |
| Fairway Crested | 30% |
| Sheep Fescue | 30% |
| Perennial Ryegrass | 40% |
- Apply the above mix at 90 lbs./acre. Include all cost for labor, equipment, and materials necessary to complete the work in the price bid for "Seeding Class III."
- 430-P01 COMMERCIAL GRADE HOT MIX ASPHALT: Submit a mix design that meets FAA 43 for approval. The Hot Mix Asphalt used will be accepted by one random aggregate and mix sample representing the plan quantity for the project.
- 430-P02 ORDINARY COMPACTION OF HOT MIX ASPHALT: Compact asphalt in accordance with Section 430.04 I.3 of the Standard Specifications, modified as follows; Use one self-propelled roller such as a single drum or double drum steel roller of adequate size to obtain compaction without damage to the trail surface or subgrade.
- 714-P01 PIPE CONDUIT: All new Pipe Conduit installed are intended to be Corrugated Steel Pipe. Match existing Pipe Conduit material for Pipe Conduit Extensions.
- 714-P02 FLAP GATE: Include all costs associated with Remove and Relay Flapgate in the bid price for "Flap Gate – Relay All Sizes".
- 750-P01 SIDEWALK CONCRETE 6IN: Include the cost to sawcut and remove asphalt to provide a clean tie in edge for Concrete Sidewalk. Include the sawcut and removal in the unit price "Sidewalk Concrete 6IN".
- 750-P02 DETECTABLE WARNING PANELS: Provide cast iron, stainless steel, or galvanized steel detectable warning panels. Color to be Safety Yellow U.S. ANSI Z535.1-1991, 6.3.
- 752-P01 VEHICLE GATE: Salvage all mounting hardware and gates. Reset gate in location specified in the plan sheets. Include all costs associated with removing, salvaging, resetting, and all other items associated with resetting/installing the gate in the bid price for "Reset Vehicle Gate". See Section 20 for gate detail.
- 752-P02 FENCE: Resetting of fence will require additional corner posts. Include cost of corner posts and all costs associated with installing additional corner posts in the bid price for "Fence Remove and Reset".





	STATE	PROJECT NO.	SECTION NO.	SHEET NO.
	ND	TAC-1-981(138)	60	1
SPEC	CODE	BID ITEM	QTY	UNIT
202	0132	REMOVAL OF BITUMINOUS SURFACING		
		Sta 10+08	1	SY
302	0120	AGGREGATE BASE COURSE CL 5		
		Sta 10+21 to 20+00	250	TON
430	0500	COMMERCIAL GRADE HOT MIX ASPHALT		
		Sta 10+21 to 20+00	242	TON
714	0905	PIPE CONC REINF 36IN CL III		
		Sta 16+06.51, 3.27' Lt to Sta 16+06.41, 9.27' Lt	6	LF
		Sta 16+14.17, 2.70' Lt to Sta 16+14.16, 8.70' Lt	6	LF
714	4110	PIPE CONDUIT 30IN		
		Sta 16+95.5 9.25' Lt to 17+16.8 19.74' Rt	36	LF
714	9660	REMOVE & RELAY END SECTION-ALL TYPE & SIZES		
		Sta 16+06.41, 9.27' Lt	1	EA
		Sta 16+14.16, 8.70' Lt	1	EA
752	0922	FENCE REMOVE & RESET		
		Sta 10+23 to 14+22 Lt	410	LF
		Sta 15+90 to 20+00 Lt	400	LF



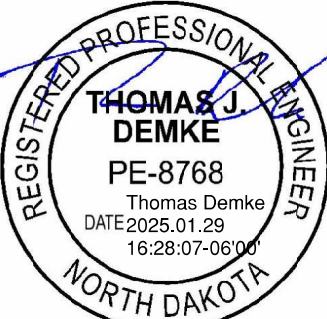


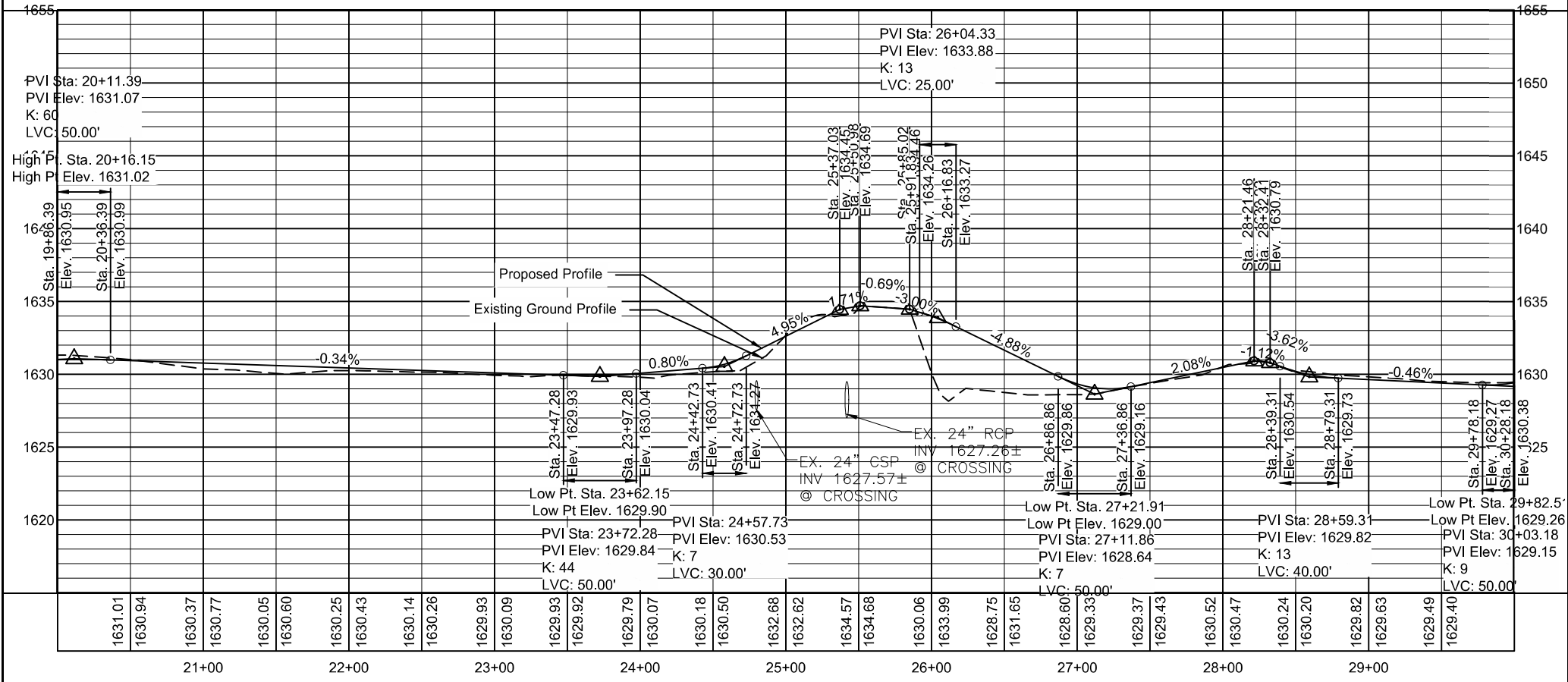
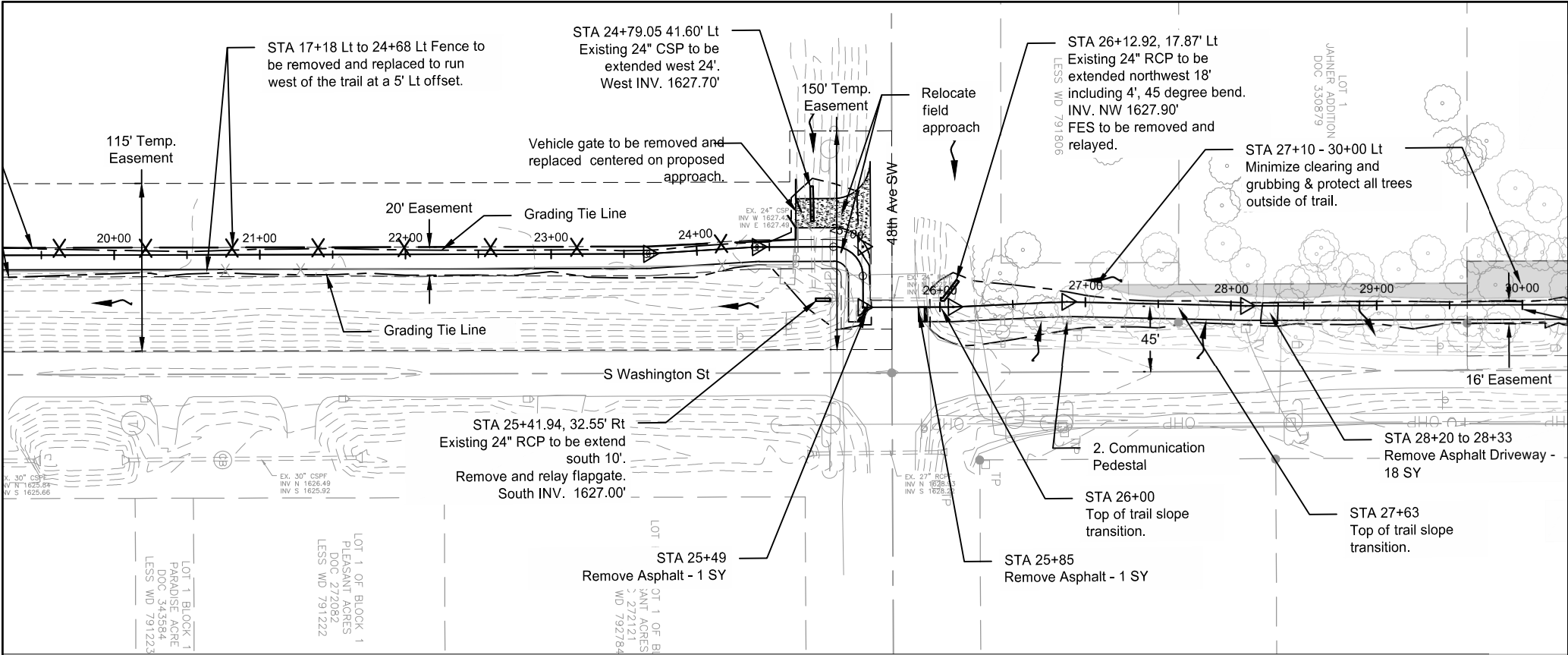
SCALE: 1 INCH = 100 FEET

Plan & Profile

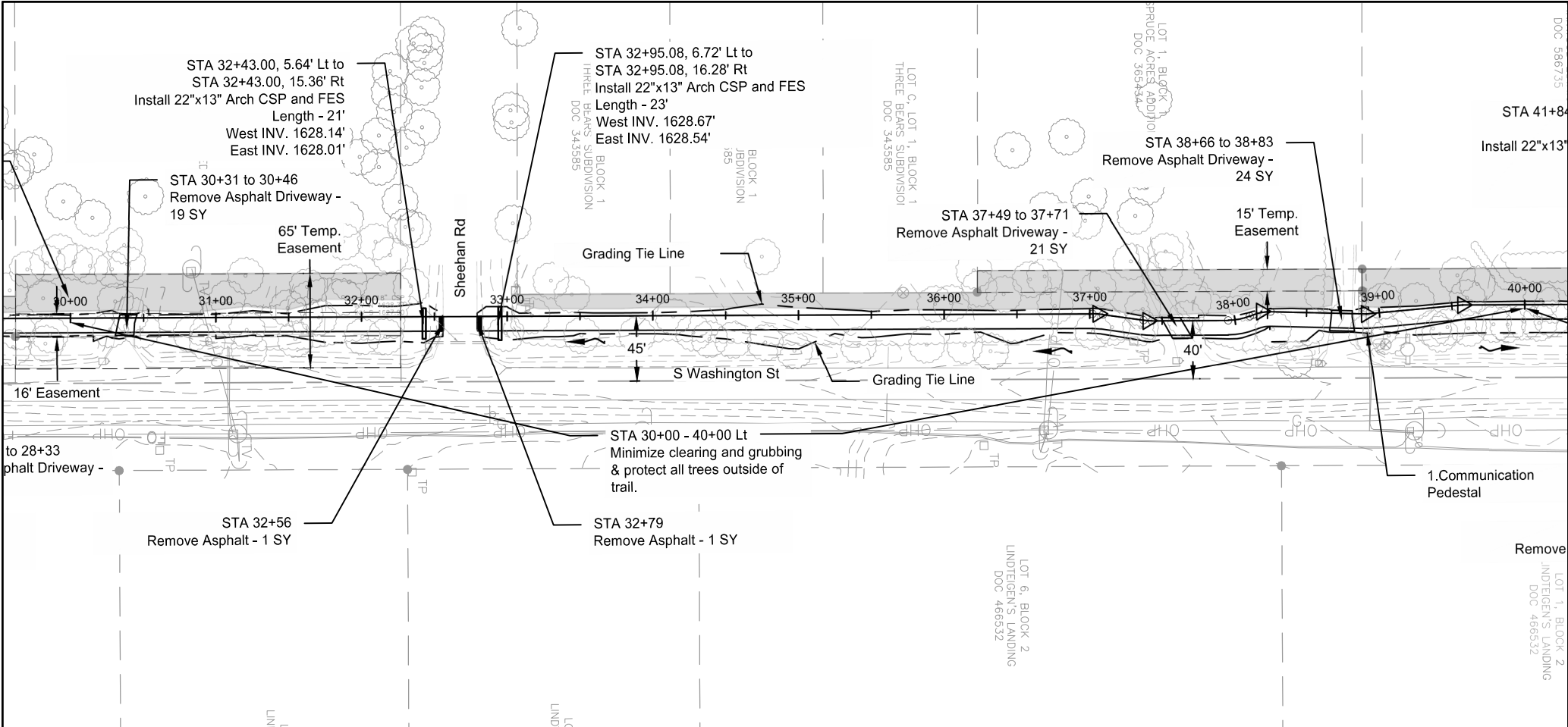
Sta 10+00 to Sta 20+00

South Washington Street Trail Extension
Meridian Drive to Sibley Park





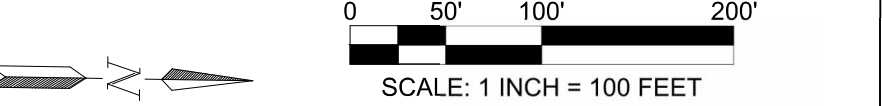
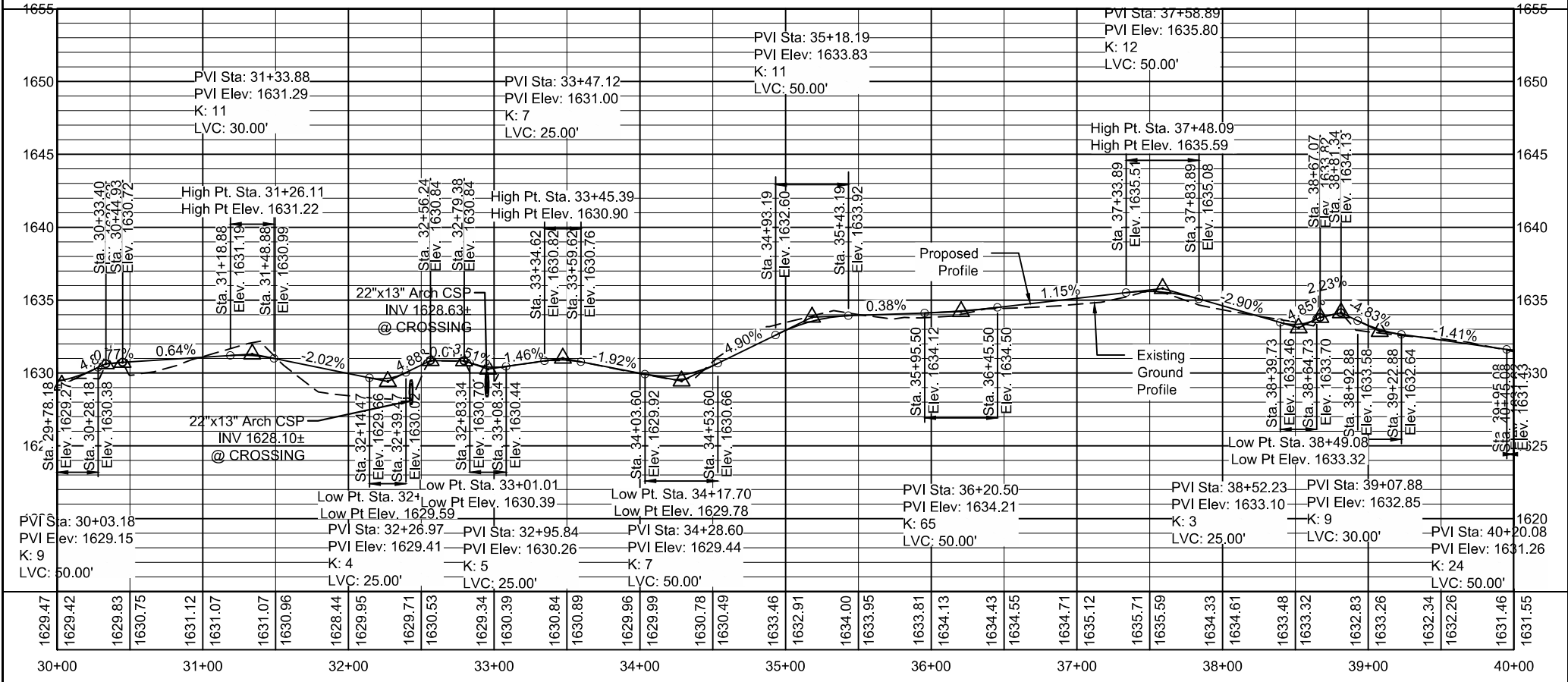
SPEC	CODE	STATE	PROJECT NO.	SECTION NO.	SHEET NO.
		ND	TAC-1-981(138)	60	2
SPEC	CODE	BID ITEM		QTY	UNIT
202	0132	REMOVAL OF BITUMINOUS SURFACING			
		Sta 25+49		1	SY
		Sta 25+85		1	SY
202	0169	REMOVAL OF END SECTION-ALL TYPES & SIZES			
		Sta 24+79.05, 17.50' Lt - 24" CSP		1	EA
302	0120	AGGREGATE BASE COURSE CL 5			
		Sta 20+00 to 30+00 including approach		287	TON
430	0500	COMMERCIAL GRADE HOT MIX ASPHALT			
		Sta 20+00 to 30+00		233	TON
714	0615	PIPE CONC REINF 24IN CL III			
		Sta 25+41.91, 22.55' Lt - Sta 25+41.94, 32.55' Rt		10	LF
		Sta 26+00.39,5.34' Lt - 26+12.92, 17.87' Lt w/ 45 degree be		18	LF
714	5035	PIPE CORR STEEL .064IN 24IN			
		Sta 24+79.49, 17.60' Lt - Sta 24+79.05, 41.60' Lt		24	LF
714	5820	END SECT CORR STEEL .064IN 24IN			
		Sta 24+79.05, 41.60' Lt - 24" CSP		1	EA
714	9660	REMOVE & RELAY END SECTION-ALL TYPE & SIZES			
		Sta 26+12.92, 17.87' Lt - 24" RCP		1	EA
714	9925	FLAP GATE-RELAY ALL SIZES			
		Sta 25+41.94, 32.55' Rt		1	EA
752	0922	FENCE REMOVE & RESET			
		Sta 20+00 to 24+68 Lt		480	LF
752	2110	RESET VEHICLE GATE			
		Sta 24+68 13.0'-33.0' Lt		1	EA
752	2120	REMOVE VEHICLE GATE			
		Sta 24+68		1	EA
NOTES:					
1. SEE SECTION 2 FOR CURB RAMP LAYOUTS.					
2. ADJUST PATH LOCATION, IF NECESSARY TO PROVIDE 2' MINIMUM DISTANCE BETWEEN COMMUNICATION PEDESTAL AND EDGE OF SHARED USE TRAIL.					
<div><div><div></div><div></div><div></div><div></div><div></div><div></div><div></div><div></div><div></div><div></div><div></div><div></div><div></div><div></div><div></div><div></div><div></div><div></div><div></div><div></div><div></div><div></div><div></div><div></div><div></div><div></div><div></div><div></div><div></div><div></div><div></div><div></div><div></div><div></div><div></div><div></div><div></div><div></div><div></div><div></div><div></div><div></div><div></div><div></div><div></div><div></div><div></div><div></div><div></div><div></div><div></div><div></div><div></div><div></div><div></div><div></div><div></div><div></div><div></div><div></div><div></div><div></div><div></div><div></div><div></div><div></div><div></div><div></div><div></div><div></div><div></div><div></div><div></div><div></div><div></div><div></div><div></div><div></div><div></div><div></div><div></div><div></div><div></div><div></div><div></div><div></div><div></div><div></div><div></div><div></div><div></div><div></div><div></div><div></div><div></div><div></div><div></div><div></div><div></div><div></div><div></div><div></div><div></div><div></div><div></div><div></div><div></div><div></div><div></div><div></div><div></div><div></div><div></div><div></div><div></div><div></div><div></div><div></div><div></div><div></div><div></div><div></div><div></div><div></div><div></div><div></div><div></div><div></div><div></div><div></div><div></div><div></div><div></div><div></div><div></div><div></div><div></div><div></div><div></div><div></div><div></div><div></div><div></div><div></div><div></div><div></div><div></div><div></div><div></div><div></div><div></div><div></div><div></div><div></div><div></div><div></div><div></div><div></div><div></div><div></div><div></div><div></div><div></div><div></div><div></div><div></div><div></div><div></div><div></div><div></div><div></div><div></div><div></div><div></div><div></div><div></div><div></div><div></div><div></div><div></div><div></div><div></div><div></div><div></div><div></div><div></div><div></div><div></div><div></div><div></div><div></div><div></div><div></div><div></div><div></div><div></div><div></div><div></div><div></div><div></div><div></div><div></div><div></div><div></div><div></div><div></div><div></div><div></div><div></div><div></div><div></div><div></div><div></div><div></div><div></div><div></div><div></div><div></div><div></div><div></div><div></div><div></div><div></div><div></div><div></div><div></div><div></div><div></div><div></div><div></div><div></div><div></div><div></div><div></div><div></div><div></div><div></div><div></div><div></div><div></div><div></div><div></div><div></div><div></div><div></div><div></div><div></div><div></div><div></div><div></div><div></div><div></div><div></div><div></div><div></div><div></div><div></div><div></div><div></div><div></div><div></div><div></div><div></div><div></div><div></div><div></div><div></div><div></div><div></div><div></div><div></div><div></div><div></div><div></div><div></div><div></div><div></div><div></div><div></div><div></div><div></div><div></div><div></div><div></div><div></div><div></div><div></div><div></div><div></div><div></div><div></div><div></div><div></div><div></div><div></div><div></div><div></div><div></div><div></div><div></div><div></div><div></div><div></div><div></div><div></div><div></div><div></div><div></div><div></div><div></div><div></div><div></div><div></div><div></div><div></div><div></div><div></div><div></div><div></div><div></div><div></div><div></div><div></div><div></div><div></div><div></div><div></div><div></div><div></div><div></div><div></div><div></div><div></div><div></div><div></div><div></div><div></div><div></div><div></div><div></div><div></div><div></div><div></div><div></div><div></div><div></div><div></div><div></div><div></div><div></div><div></div><div></div><div></div><div></div><div></div><div></div><div></div><div></div><div></div><div></div><div></div><div></div><div></div><div></div><div></div><div></div><div></div><div></div><div></div><div></div><div></div><div></div><div></div><div></div><div></div><div></div><div></div><div></div><div></div><div></div><div></div><div></div><div></div><div></div><div></div><div></div><div></div><div></div><div></div><div></div><div></div><div></div><div></div><div></div><div></div><div></div><div></div><div></div><div></div><div></div><div></div><div></div><div></div><div></div><div></div><div></div><div></div><div></div><div></div><div></div><div></div><div></div><div></div><div></div><div></div><div></div><div></div><div></div><div></div><div></div><div></div><div></div><div></div><div></div><div></div><div></div><div></div><div></div><div></div><div></div><div></div><div></div><div></div><div></div><div></div><div></div><div></div><div></div><div></div><div></div><div></div><div></div><div></div><div></div><div></div><div></div><div></div><div></div><div></div><div></div><div></div><div></div><div></div><div></div><div></div><div></div><div></div><div></div><div></div><div></div><div></div><div></div><div></div><div></div><div></div><div></div><div></div><div></div><div></div><div></div><div></div><div></div><div></div><div></div><div></div><div></div><div></div><div></div><div></div><div></div><div></div><div></div><div></div><div></div><div></div><div></div><div></div><div></div><div></div><div></div><div></div><div></div><div></div><div></div><div></div><div></div><div></div><div></div><div></div><div></div><div></div><div></div><div></div><div></div><div></div><div></div><div></div><div></div><div></div><div></div><div></div><div></div><div></div><div></div><div></div><div></div><div></div><div></div><div></div><div></div><div></div><div></div><div></div><div></div><div></div><div></div><div></div><div></div><div></div><div></div><div></div><div></div><div></div><div></div><div></div><div></div><div></div><div></div><div></div><div></div><div></div><div></div><div></div><div></div><div></div><div></div><div></div><div></div><div></div><div></div><div></div><div></div><div></div><div></div><div></div><div></div><div></div><div></div><div></div><div></div><div></div><div></div><div></div><div></div><div></div><div></div><div></div><div></div><div></div><div></div><div></div><div></div><div></div><div></div><div></div><div></div><div></div><div></div><div></div><div></div><div></div><div></div><div></div><div></div><div></div><div></div><div></div><div></div><div></div><div></div><div></div><div></div><div></div><div></div><div></div><div></div><div></div><div></div><div></div><div></div><div></div><div></div><div></div><div></div><div></div><div></div><div></div><div></div><div></div><div></div><div></div><div></div><div></div><div></div><div></div><div></div><div></div><div></div><div></div><div></div><div></div><div></div><div></div><div></div><div></div><div></div><div></div><div></div><div></div><div></div><div></div><div></div><div></div><div></div><div></div><div></div><div></div><div></div><div></div><div></div><div></div><div></div><div></div><div></div><div></div><div></div><div></div><div></div><div></div><div></div><div></div><div></div><div></div><div></div><div></div><div></div><div></div><div></div><div></div><div></div><div></div><div></div><div></div><div></div><div></div><div></div><div></div><div></div><div></div><div></div><div></div><div></div><div></div><div></div><div></div><div></div><div></div><div></div><div></div><div></div><div></div><div></div><div></div><div></div><div></div><div></div><div></div><div></div><div></div><div></div><div></div><div></div><div></div><div></div><div></div><div></div><div></div><div></div><div></div><div></div><div></div><div></div><div></div><div></div><div></div><div></div><div></div><div></div><div></div><div></div><div></div><div></div><div></div><div></div><div></div><div></div><div></div><div></div><div></div><div></div><div></div><div></div><div></div><div></div><div></div><div></div><div></div><div></div><div></div><div></div><div></div><div></div><div></div><div></div><div></div><div></div><div></div><div></div><div></div><div></div><div></div><div></div><div></div><div></div><div></div><div></div><div></div><div></div><div></div><div></div><div></div><div></div><div></div><div></div><div></div><div></div><div></div><div></div><div></div><div></div><div></div><div></div><div></div><div></div><div></div><div></div><div></div><div></div><div></div><div></div><div></div><div></div><div></div><div></div><div></div><div></div><div></div><div></div><div></div><div></div><div></div><div></div><div></div><div></div><div></div><div></div><div></div><div></div><div></div><div></div><div></div><div></div><div></div><div></div><div></div><div></div><div></div><div></div><div></div><div></div><div></div><div></div><div></div><div></div><div></div><div></div><div></div><div></div><div></div><div></div><div></div><div></div><div></div><div></div><div></div><div></div><div></div><div></div><div></div><div></div><div></div><div></div><div></div><div></div><div></div><div></div><div></div><div></div><div></div><div></div><div></div><div></div><div></div><div></div><div></div><div></div><div></div><div></div><div></div><div></div><div></div><div></div><div></div><div></div><div></div><div></div><div></div><div></div><div></div><div></div><div></div><div></div><div></div><div></div><div></div><div></div><div></div><div></div><div></div><div></div><div></div><div></div><div></div><div></div><div></div><div></div></div></div>					



STATE	PROJECT NO.	SECTION NO.	SHEET NO.
ND	TAC-1-981(138)	60	3

SPEC	CODE	BID ITEM	QTY	UNIT
202	0132	REMOVAL OF BITUMINOUS SURFACING		
		Sta 30+31 to 30+46	19	SY
		Sta 32+56	1	SY
		Sta 32+79	1	SY
		Sta 37+49 to 37+71	21	SY
		Sta 38+66 to 38+83	24	SY
302	0120	AGGREGATE BASE COURSE CL 5		
		Sta 30+00 to 40+00	239	TON
430	0500	COMMERCIAL GRADE HOT MIX ASPHALT		
		Sta 30+00 to 40+00	231	TON
714	4216	PIPE CONDUIT ARCH 22IN X 13IN		
		Sta 32+43.00, 5.64' Lt - Sta 32+43.00, 15.36' Rt	21	LF
		Sta 32+95.08, 6.72' Lt - Sta 32+95.08, 16.28' Rt	23	LF

NOTES:
1. ADJUST PATH LOCATION, IF NECESSARY TO PROVIDE 2' MINIMUM DISTANCE BETWEEN COMMUNICATION PEDESTAL AND EDGE OF SHARED USE TRAIL.



Plan & Profile

Sta 30+00 to Sta 40+00

South Washington Street Trail Extension
Meridian Drive to Sibley Park