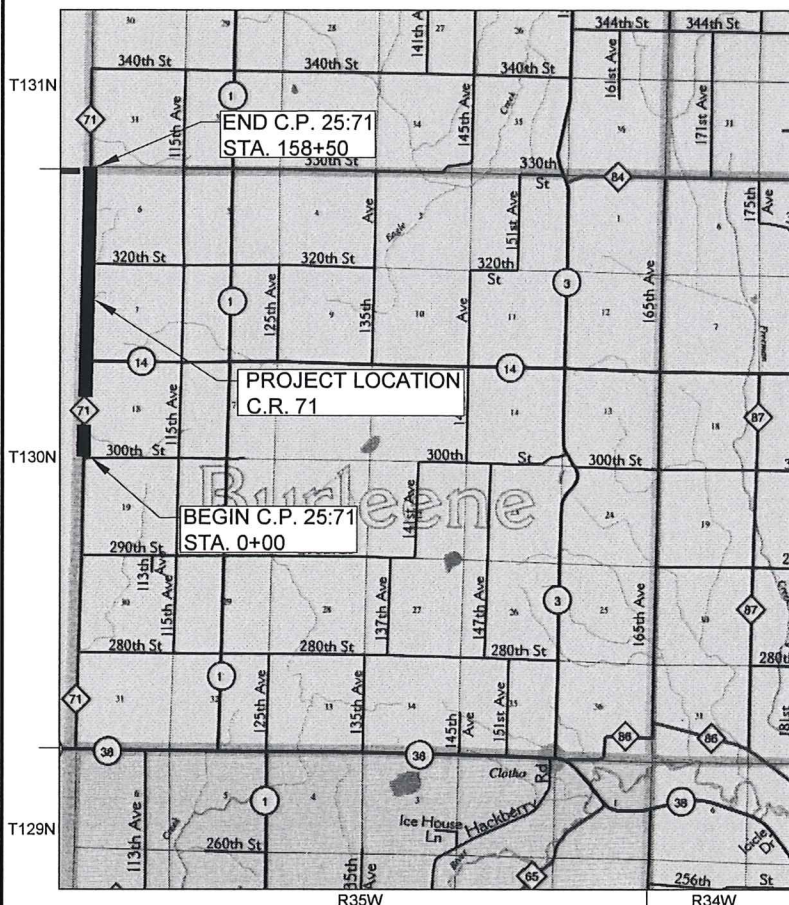


MINNESOTA DEPARTMENT OF TRANSPORTATION
TODD COUNTY

CONSTRUCTION PLAN FOR AGGREGATE SURFACING
LOCATED ON CR #71 FROM 300TH ST TO 330TH ST

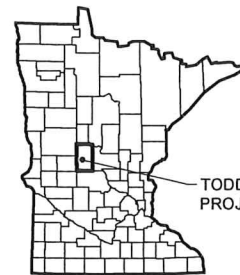
COUNTY PROJECT NO. 25:71
GROSS LENGTH 15,850 FEET 3.002 MILES
BRIDGES-LENGTH FEET MILES
EXCEPTIONS LENGTH FEET MILES
NET LENGTH 15,850 FEET 3.002 MILES



PARTIAL MAP - TODD COUNTY
SCALE: AS SHOWN



SCALE (IN MILES)



TODD COUNTY
PROJECT LOCATION

GOVERNING SPECIFICATIONS:

THE 2020 EDITION OF THE MINNESOTA DEPARTMENT OF
TRANSPORTATION "STANDARD SPECIFICATIONS FOR
CONSTRUCTION" SHALL GOVERN.

INDEX TO SHEETS:

SHEET NO.	DESCRIPTION
1	TITLE SHEET
2	ESTIMATED QUANTITIES & TYPICAL SECTION

THIS PLAN CONTAINS 2 SHEETS

ALL APPLICABLE FEDERAL, STATE, AND LOCAL LAWS AND
ORDINANCES WILL BE COMPLIED WITH IN THE CONSTRUCTION OF
THIS PROJECT.

H:\PROJECTS\2025 PROJECTS\Gravel Surface Project\CP 25-71\CP-25-71-PL.dwg Plotted by: Todd Jackson 1/9/2025 11:37:50 AM

I HEREBY CERTIFY THAT THIS PLAN WAS PREPARED BY ME OR UNDER MY DIRECT
SUPERVISION AND THAT I AM A DULY LICENSED PROFESSIONAL ENGINEER UNDER THE LAWS
OF THE STATE OF MINNESOTA.

APPROVED: 
LOREN L. FELLBAUM LIC. NO. 43144
TODD COUNTY ENGINEER

DATE: 01-10-25

TODD COUNTY PUBLIC WORKS
C.P. NO. 25:71
TITLE SHEET

SHEET NO.

1

SHEET 1 OF 2

STATEMENT OF ESTIMATED QUANTITIES				
NOTES	SPEC. NUMBER	ITEM	UNIT	EST. QUANT.
(1), (2), (3)	2118.509	AGGREGATE SURFACING CLASS 1 (MOD.)	TON	4,900

CONSTRUCTION NOTES:

- (1) MATERIAL SHALL CONFORM TO SPEC. 3138 FOR CLASS 1 AGGREGATE AND SHALL CONTAIN AT LEAST 10 PERCENT CRUSHED MATERIAL. NO ORGANIC MATERIAL WILL BE ALLOWED IN PRODUCTION, SEE SPECIAL PROVISIONS.
- (2) CONTRACTOR SHALL PROVIDE "ROAD WORK AHEAD" SIGNS ON THE ENDS OF THE PROJECT AND AT EACH INTERSECTING ROAD APPROACH AS DIRECTED BY THE ENGINEER. THIS WORK WILL BE CONSIDERED INCIDENTAL.
- (3) QUANTITY CONTAINS 10% ADDITIONAL QUANTITY FOR STRENGTHENING AND MISCELLANEOUS SHAPING.

BASIS FOR ESTIMATED QUANTITIES

AGGREGATE BASE DENSITY	105 LBS/SQ. YD./1" DEPTH
------------------------	--------------------------

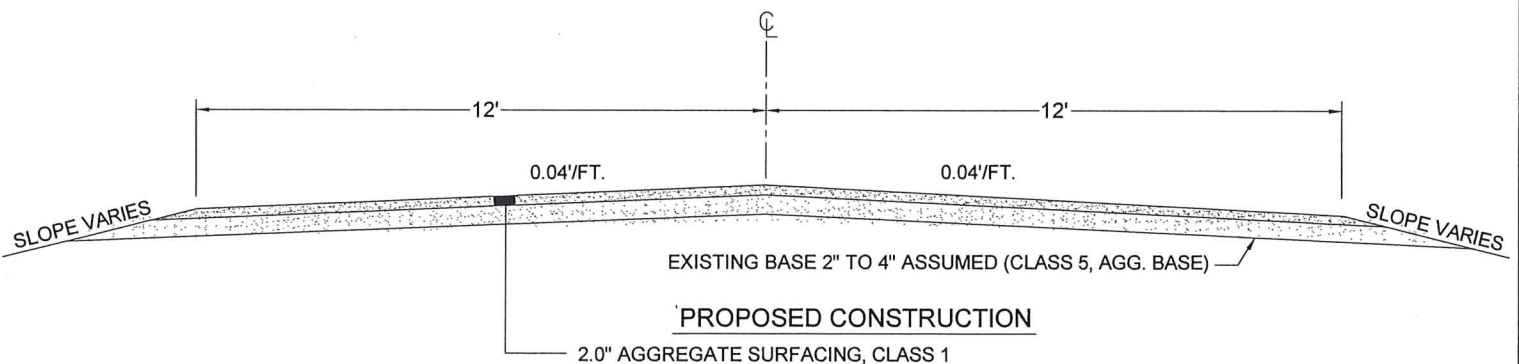
STANDARD PLATES

THE FOLLOWING STANDARD PLATES, APPROVED BY THE FEDERAL HIGHWAY ADMINISTRATION SHALL APPLY ON THIS PROJECT

PLATE NO.	DESCRIPTION
8000K	TEMPORARY CHANNELIZERS

AGGREGATE SURFACING

STATION 0+00 TO STATION 158+50



H:\PROJECTS\30205 PROJECTS\Gravel Surface Project\CP 25-71\CP-25-71-PL.dwg Plotted by: Todd Jackson 1/6/2025 11:38:00 AM



DATE: JAN. 2025
 HORIZ. SCALE: N/A
 VERT. SCALE: N/A
 DRAWN BY: T.B.J.
 CHECKED BY: W.W.J.
 PLAN STATUS: FINAL

I HEREBY CERTIFY THAT THIS PLAN WAS PREPARED BY ME OR UNDER MY DIRECT SUPERVISION AND THAT I AM A DULY LICENSED PROFESSIONAL ENGINEER UNDER THE LAWS OF THE STATE OF MINNESOTA.

Loren L. Fellbaum 01-10-25
 LOREN L. FELLBAUM LIC. NO. 43144 DATE

TODD COUNTY PUBLIC WORKS

C.P. NO. 25:71

ESTIMATED QUANTITIES & TYPICAL SECTION

SHEET NO.

2

SHEET 2 OF 2