

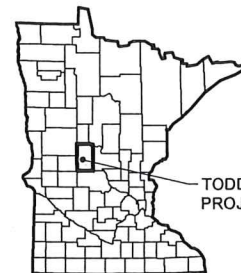
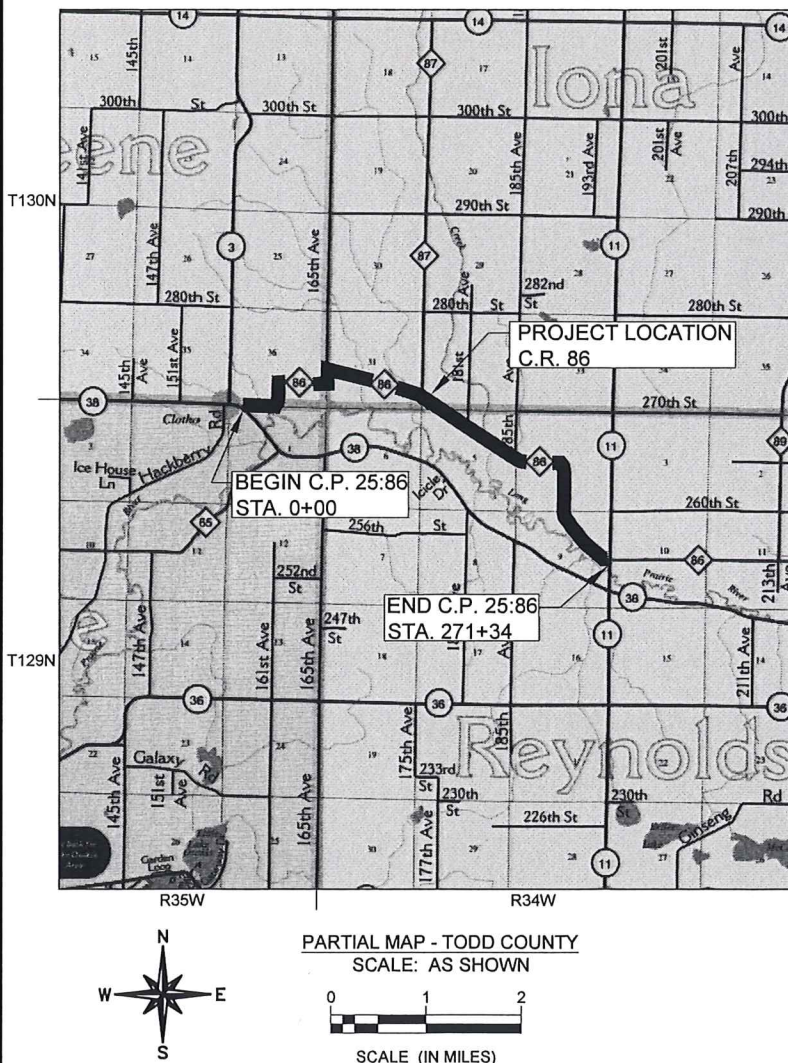
MINNESOTA DEPARTMENT OF TRANSPORTATION

TODD COUNTY

CONSTRUCTION PLAN FOR AGGREGATE SURFACING LOCATED ON CR #86 FROM CSAH #38 TO CSAH #11

COUNTY PROJECT NO. 25:86

GROSS LENGTH	27,134	FEET	5.139	MILES
BRIDGES-LENGTH		FEET		MILES
EXCEPTIONS LENGTH		FEET		MILES
NET LENGTH	27,134	FEET	5.139	MILES



GOVERNING SPECIFICATIONS:

THE 2020 EDITION OF THE MINNESOTA DEPARTMENT OF TRANSPORTATION "STANDARD SPECIFICATIONS FOR CONSTRUCTION" SHALL GOVERN.

INDEX TO SHEETS:

SHEET NO.	DESCRIPTION
1	TITLE SHEET
2	ESTIMATED QUANTITIES & TYPICAL SECTION

THIS PLAN CONTAINS 2 SHEETS

ALL APPLICABLE FEDERAL, STATE, AND LOCAL LAWS AND ORDINANCES WILL BE COMPLIED WITH IN THE CONSTRUCTION OF THIS PROJECT.

H:\PROJECTS\2025 PROJECTS\Gravel Surface Project\CP 25-86\CP-25-86-PL.dwg Plotted by: Todd Jackson 1/8/2025 11:37:18 AM

I HEREBY CERTIFY THAT THIS PLAN WAS PREPARED BY ME OR UNDER MY DIRECT SUPERVISION AND THAT I AM A DULY LICENSED PROFESSIONAL ENGINEER UNDER THE LAWS OF THE STATE OF MINNESOTA.

APPROVED:

Loren L. Fellbaum
LOREN L. FELLBAUM
TODD COUNTY ENGINEER

LIC. NO. 43144

DATE:

01-10-25

TODD COUNTY PUBLIC WORKS
C.P. NO. 25:86
TITLE SHEET

SHEET NO.

1

SHEET 1 OF 2

STATEMENT OF ESTIMATED QUANTITIES				
NOTES	SPEC. NUMBER	ITEM	UNIT	EST. QUANT.
(1), (2), (3)	2118.509	AGGREGATE SURFACING CLASS 1 (MOD.)	TON	11,100

CONSTRUCTION NOTES:

- (1) MATERIAL SHALL CONFORM TO SPEC. 3138 FOR CLASS 1 AGGREGATE AND SHALL CONTAIN AT LEAST 10 PERCENT CRUSHED MATERIAL. NO ORGANIC MATERIAL WILL BE ALLOWED IN PRODUCTION, SEE SPECIAL PROVISIONS.
- (2) CONTRACTOR SHALL PROVIDE "ROAD WORK AHEAD" SIGNS ON THE ENDS OF THE PROJECT AND AT EACH INTERSECTING ROAD APPROACH AS DIRECTED BY THE ENGINEER. THIS WORK WILL BE CONSIDERED INCIDENTAL.
- (3) QUANTITY CONTAINS 10% ADDITIONAL QUANTITY FOR STRENGTHENING AND MISCELLANEOUS SHAPING.

BASIS FOR ESTIMATED QUANTITIES

AGGREGATE BASE DENSITY	105 LBS/SQ. YD./1" DEPTH
------------------------	--------------------------

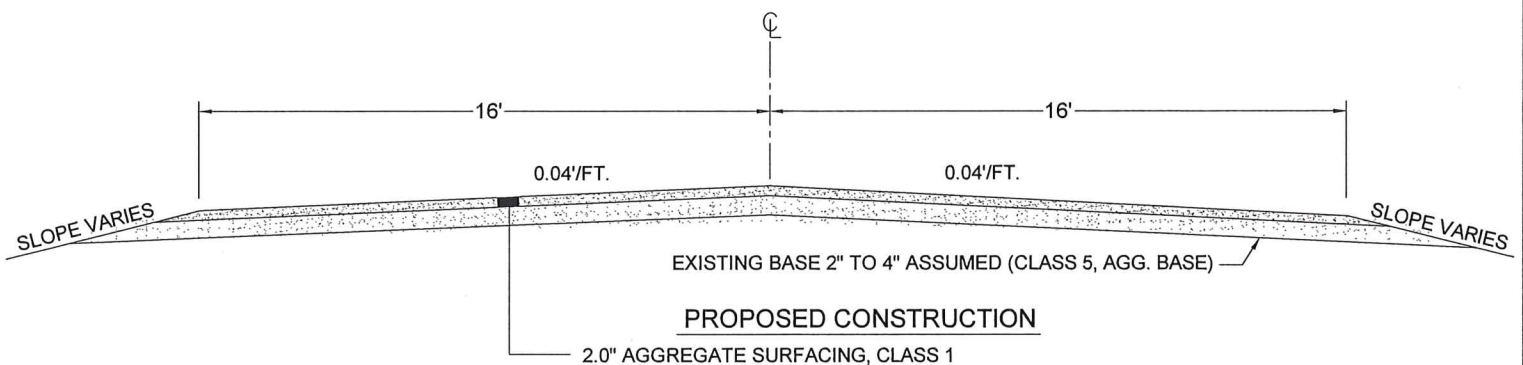
STANDARD PLATES

THE FOLLOWING STANDARD PLATES, APPROVED BY THE FEDERAL HIGHWAY ADMINISTRATION SHALL APPLY ON THIS PROJECT

PLATE NO.	DESCRIPTION
8000K	TEMPORARY CHANNELIZERS

AGGREGATE SURFACING

STATION 0+00 TO STATION 271+34



H:\PROJECTS\2025 PROJECTS\Gravel Surface Project\CP 25-86\CP-25-86-PL.dwg Plotted by: Todd Jackson 1/6/2025 11:37:29 AM



DATE: JAN. 2025
 HORIZ. SCALE: N/A
 VERT. SCALE: N/A
 DRAWN BY: T.B.J.
 CHECKED BY: W.W.J.
 PLAN STATUS: FINAL

I HEREBY CERTIFY THAT THIS PLAN WAS PREPARED BY ME OR UNDER MY DIRECT SUPERVISION AND THAT I AM A DULY LICENSED PROFESSIONAL ENGINEER UNDER THE LAWS OF THE STATE OF MINNESOTA.

Loren L. Fellbaum 01-10-25
 LOREN L. FELLBAUM LIC. NO. 43144 DATE

TODD COUNTY PUBLIC WORKS
 C.P. NO. 25:86
ESTIMATED QUANTITIES & TYPICAL SECTION

SHEET NO.
2

SHEET 2 OF 2